

LEGEND

THE LIGHT FITTING SUPPLIER CONTACT DETAILS MAY BE AVAILABLE ON THE EDG WEBSITE VIA THE FOLLOWING LINK www.edg.net.au/Links/Lighting.htm

TYPE	LAMPS	DESCRIPTION	COLOUR / ACCESSORY	CATALOGUE No
L1	3000K LED	WALL MOUNTED EXTERNAL UP DOWN WALL LIGHT C/W DALI DIMMABLE DRIVER POSITION THE FITTING HEIGHT AS PER THE ARCHITECTURAL ELEVATION DETAILS	DARK GREY	DELTA NOCTA SQ85 DOWN-UP WFL 927 DIMS N DARK GREY - 30122 9205 N
L2	28W 3000K LED	RECESSED DOWNLIGHT C/W REMOTE DALI DIMMABLE 100,000 HOUR DRIVER	WHITE	GAMMA ILLUMINATION CORBEL 1418-3K-28W
L7	5W 3000K LED	PLANTER STAKE LIGHT PROVIDE EACH GROUP OF L7 FITTINGS WITH A REMOTE DEDICATED 240-24V POWER SUPPLY AND A DALI DIMMABLE INTERFACE SIZED TO ACCOMMODATE ALL OF THE L7 FITTINGS IN THE GROUP	BLACK	GAMMA ILLUMINATION RULOJ 885102
S1	14.4W/M 24V DC 3000K LED	IP67 24V DC LED STRIP MOUNTED IN AN ALUMINIUM CHANNEL RUN VERTICALLY AS PER THE EXTERNAL ELEVATION AND THE S1 DETAIL. SCREW FIX THE CHANNEL IN PLACE. AS PART OF THE ELECTRICAL SUB CONTRACT WORKS PROVIDE A TRANSLUCENT OPAL UV STABILISED DIFFUSER BETWEEN THE 100 X 100 ANGLES TO COVER THE LED STRIP AS PER THE S1 DETAIL. SCREW FIX THE DIFFUSER IN PLACE. PROVIDE THE S1 LED STRIP WITH A REMOTE DEDICATED 240-24V POWER SUPPLY AND A DALI DIMMABLE INTERFACE UNIT PER GROUP OF S1 NOT EXCEEDING 20M OF STRIP. LOCATE THE INTERFACE UNITS AND POWER SUPPLIES IN A CONCEALED ACCESSIBLE POSITION. PROVIDE A 1M LONG DIMMABLE WORKING SAMPLE OF THE S1 INSTALLATION INCLUDING THE SUPPORT, 100 X 100 ALUMINIUM ANGLES, LED LIGHTING AND DIFFUSER FOR APPROVAL PRIOR TO ORDERING THE DIFFUSERS. CUT THE S1 STRIP AND EXTRUSION AS PER THE ELEVATION WITH THE FINAL LENGTH CONFIRMED ON SITE TO MATCH THE CONSTRUCTED SUPPORT STRUCTURE.	WHITE	HAVIT HV9693-1707-WHT PLUS HV9769-IP67-280-3K - 14.4W IP67 24V DC LED STRIP
SIGNAGE CONNECTION		COORDINATE THE LOCATION AND CONNECTION WITH THE SIGN CONTRACTOR ENSURING THE GPO / ISOLATORS ARE PROVIDED WITH APPROPRIATE WEATHER PROTECTION AND ARE CONCEALED FROM VIEW.		

CIRCUITS

PROVIDE CIRCUIT DB-L1 AS A SINGLE PHASE 20 AMP RCBO PROTECTED 2.5MM CIRCUIT FROM THE LOCAL DISTRIBUTION BOARD. CONTROL CIRCUIT DB-L1 VIA CHANNELS 1 AND 2.

PROVIDE CIRCUIT DB-L2 AS A SINGLE PHASE 20 AMP RCBO PROTECTED 2.5MM CIRCUIT FROM THE LOCAL DISTRIBUTION BOARD. CONTROL CIRCUIT DB-L2 VIA CHANNELS 3 AND 4 AS WELL AS A PE CELL / TIME CLOCK SUCH THAT THE CIRCUIT IS TURNED ON 30 MINUTES PRIOR TO DUSK AND OFF 30 MINUTES AFTER THE CLOSE OF TRADING.

PROVIDE CIRCUIT DB-L3 AS A SINGLE PHASE 20 AMP RCBO PROTECTED 2.5MM CIRCUIT FROM THE LOCAL DISTRIBUTION BOARD. CONTROL CIRCUIT DB-L3 VIA A PE CELL / TIME CLOCK SUCH THAT THE CIRCUIT IS TURNED ON 30 MINUTES PRIOR TO DUSK AND OFF 30 MINUTES AFTER THE CLOSE OF TRADING.

PROVIDE CIRCUIT DN-L4 AS A SINGLE PHASE 20 AMP RCBO PROTECTED 2.5MM CIRCUIT FROM THE LOCAL DISTRIBUTION BOARD. CONTROL CIRCUIT DB-L4 VIA CHANNEL 6 AND A PE CELL / TIME CLOCK SUCH THAT THE CIRCUIT IS TURNED ON 30 MINUTES PRIOR TO DUSK AND OFF 30 MINUTES AFTER THE CLOSE OF TRADING.

CHANNELS

PROVIDE THE CHANNEL 1 CONTROL AS A MANUAL SWITCH AND A MANUAL DALI POT DIMMER LOCATED INTERNALLY BEHIND THE RECEPTION IN A POSITION AGREED TO WITH THE CLUB.

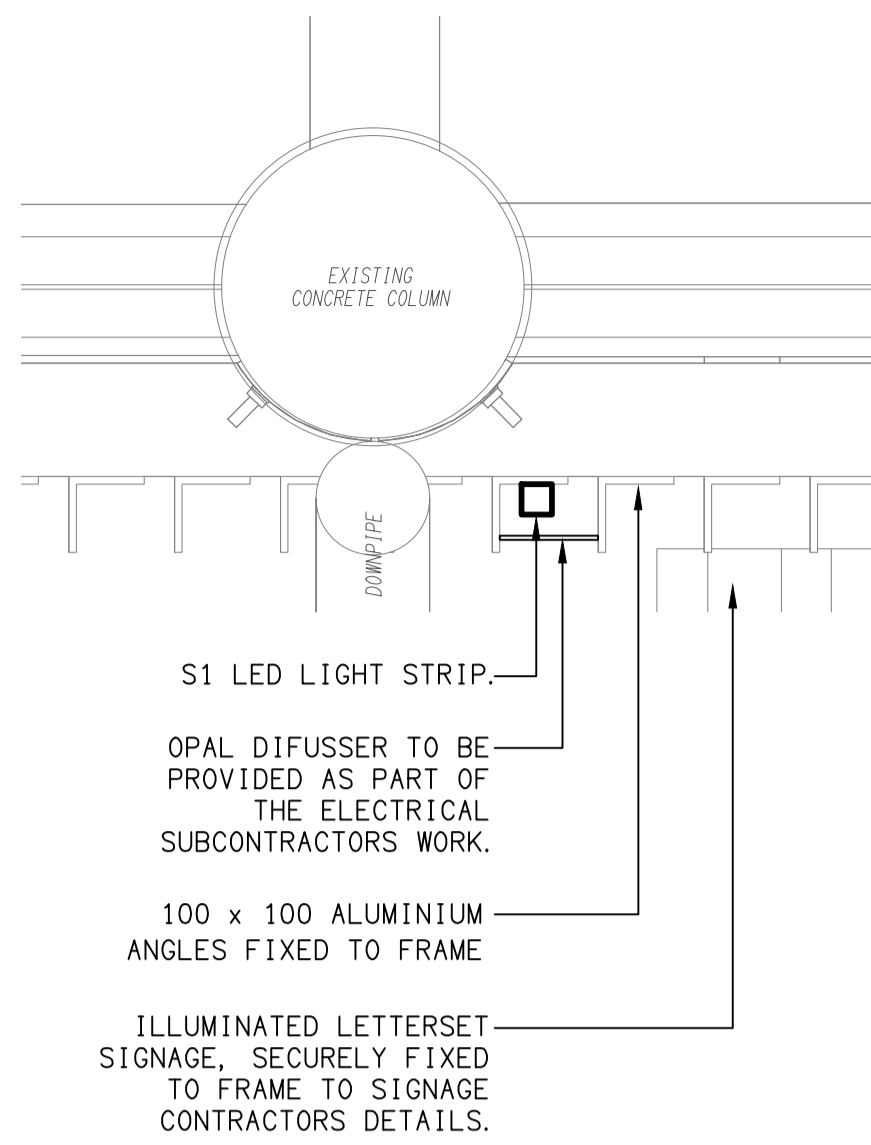
PROVIDE THE CHANNEL 2 CONTROL AS A MANUAL SWITCH AND A MANUAL DALI POT DIMMER LOCATED INTERNALLY BEHIND THE RECEPTION IN A POSITION AGREED TO WITH THE CLUB.

PROVIDE THE CHANNEL 3 CONTROL AS A MANUAL DALI POT DIMMER LOCATED IN A CONCEALED ACCESSIBLE POSITION. THE CHANNEL 3 DIMMER IS TO BE SET AS PART OF THE COMMISSIONING AND THEN LEFT AS IS. ENSURE THE DALI DIMMER SETTING IS NON-VOLATILE. CHANNEL 3 IS ALSO CONTROLLED AS PER THE DB-L2 CIRCUIT DESCRIPTION.

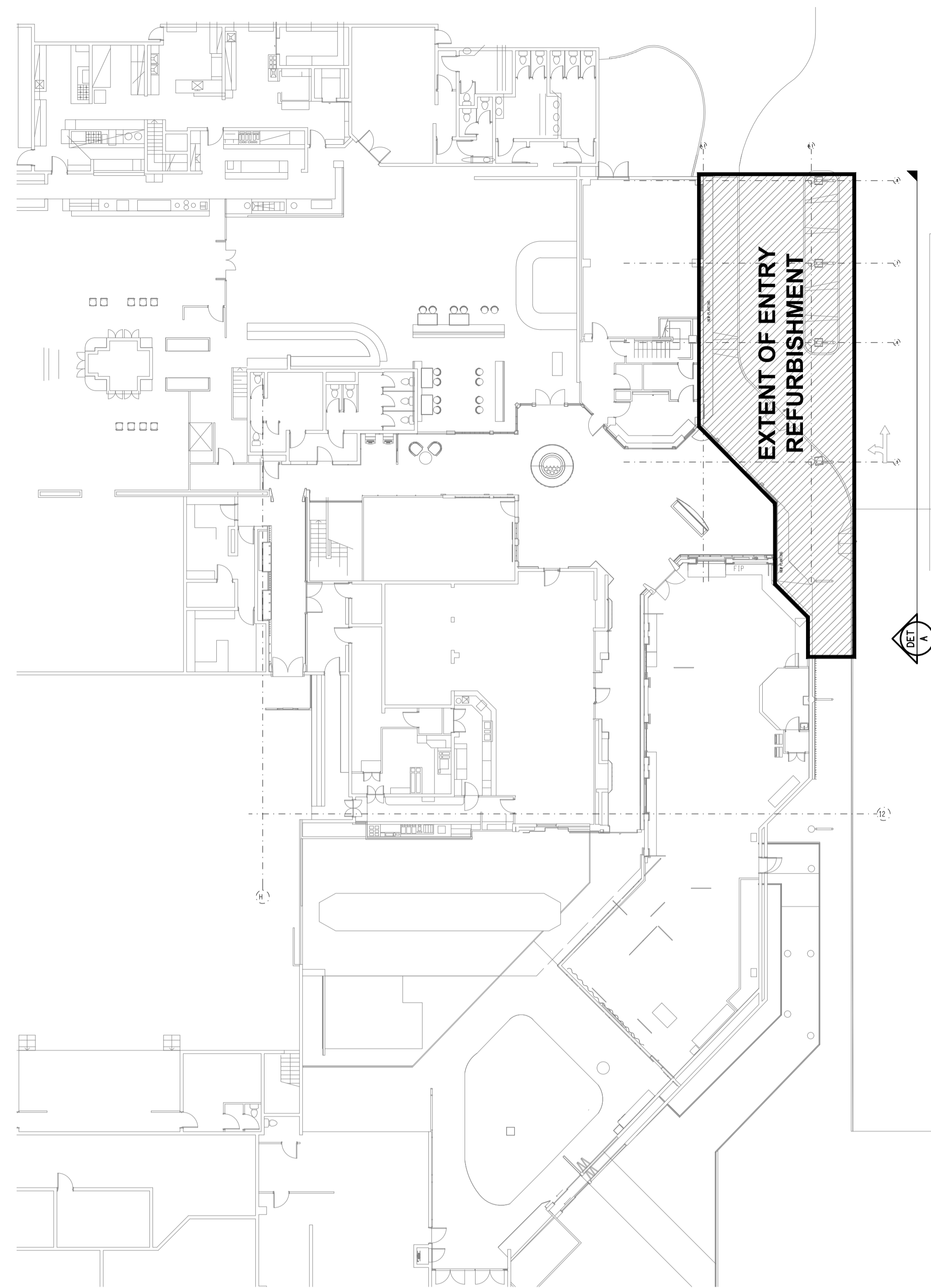
PROVIDE THE CHANNEL 4 CONTROL AS A MANUAL DALI POT DIMMER LOCATED IN A CONCEALED ACCESSIBLE POSITION. THE CHANNEL 4 DIMMER IS TO BE SET AS PART OF THE COMMISSIONING AND THEN LEFT AS IS. ENSURE THE DALI DIMMER SETTING IS NON-VOLATILE. CHANNEL 4 IS ALSO CONTROLLED AS PER THE DB-L2 CIRCUIT DESCRIPTION.

THE CHANNEL 5 CONTROL IS TO BE PROVIDED AS PER THE DB-L3 CIRCUIT DESCRIPTION.

PROVIDE THE CHANNEL 6 CONTROL AS A MANUAL DALI POT DIMMER LOCATED IN A CONCEALED ACCESSIBLE POSITION. THE CHANNEL 6 DIMMER IS TO BE SET AS PART OF THE COMMISSIONING AND THEN LEFT AS IS. ENSURE THE DALI DIMMER SETTING IS NON-VOLATILE. CHANNEL 6 IS ALSO CONTROLLED AS PER THE DB-L4 CIRCUIT DESCRIPTION.



DETAIL
S1 STRIP LIGHT MOUNTING
SCALE 1:10



SITE PLAN
ENTRY REFURBISHMENT LOCATION
SCALE 1:200

THE COPYRIGHT OF THIS DRAWING REMAINS THE PROPERTY OF THE ELECTRICAL DESIGN GROUP.

USE FIGURED DIMENSIONS IN PREFERENCE TO SCALE.

ALL DIMENSIONS TO BE VERIFIED ONSITE.

B	CONSTRUCTION	13/10/2023
REV:	DESCRIPTION:	DATE:

ELECTRICAL DESIGN GROUP
ELECTRICAL BUILDING SERVICES CONSULTANTS

BRISBANE: P.O. Box 15 Sherwood Qld 4075
Phone: (07) 3278 4375
Email: brisbane@edg.net.au
Web: www.edg.net.au

ELECTRICAL DESIGN GROUP BRISBANE PTY LTD
ACN 092 710 793

TRADING AS:
ELECTRICAL DESIGN GROUP

PROJECT:
**IRISH CLUB ENTRY
MOUNT ISA**

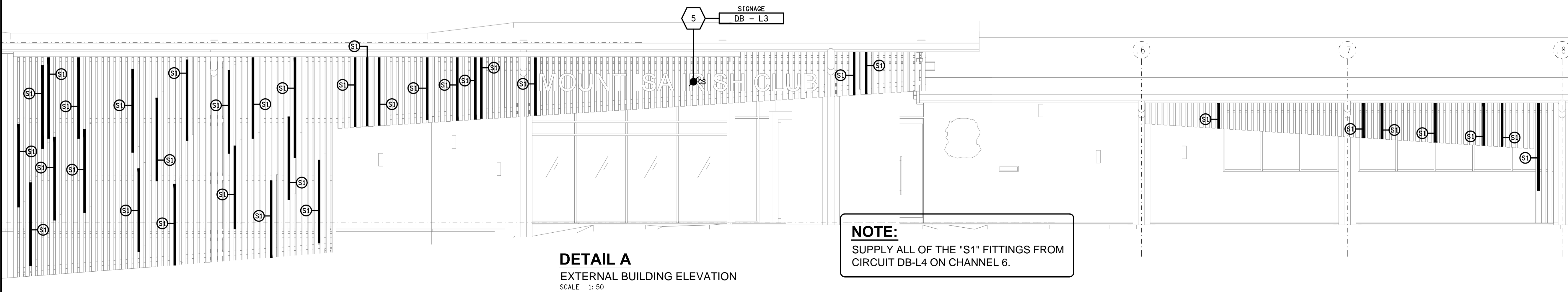
SITE ADDRESS:
**1 NINETEENTH AVENUE, PARKSIDE
MOUNT ISA**

SCALE: 1:200 & 1:50 SHEET SIZE: AT A1

DRAWING TITLE:
**ELECTRICAL SERVICES
LEGEND & SITE PLAN**

PROJECT NO. DRAWING NO. REVISION:

C2949a E01 B



DETAIL A
EXTERNAL BUILDING ELEVATION
SCALE 1:50

NOTE:
SUPPLY ALL OF THE "S1" FITTINGS FROM CIRCUIT DB-L4 ON CHANNEL 6.